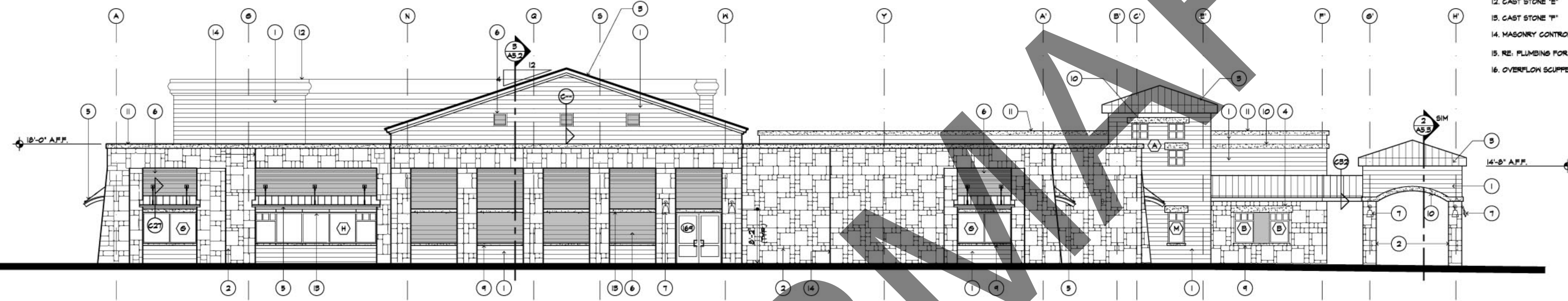


**GENERAL NOTES**

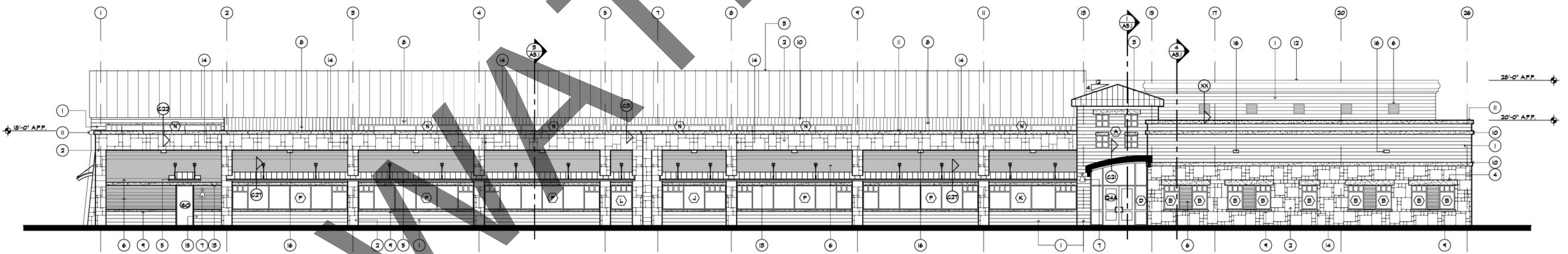
1. MASONRY CONTROL JOINTS @ 30' O.C. MAX.
2. TYPICAL WINDOW TYPE INDICATOR 'A' RE. DETAIL BOOK
3. RE ELECTRICAL FOR EXTERIOR BUILDING LIGHTING

**KEYED NOTES**

1. TYPE 'A' STONE
2. TYPE 'B' STONE
3. STANDING SEAM METAL ROOF
4. CAST STONE 'A'- TYPICAL WINDOW FRAME OVERHANG OF 6" EACH SIDE FOR THIS CAST STONE TYPE
5. EYEBROW CANOPY RE. C27 (CANOPY ABOVE DOOR 160 IS 6" WIDE)
6. FACE BRICK
7. LIGHT SCENCE RE. ELECTRICAL DRAWINGS
8. PREFINISHED FLUSH MTL. PANELS
9. CAST STONE 'B'
10. CAST STONE 'C'
11. CAST STONE 'D'
12. CAST STONE 'E'
13. CAST STONE 'F'
14. MASONRY CONTROL JOINT
15. RE. PLUMBING FOR HOSE BIBS
16. OVERFLOW SCUPPER RE. C25 & ROOF PLAN



**1 SOUTH ELEVATION**  
SCALE: 1/8" = 1'-0"



**2 EAST ELEVATION**  
SCALE: 1/8" = 1'-0"