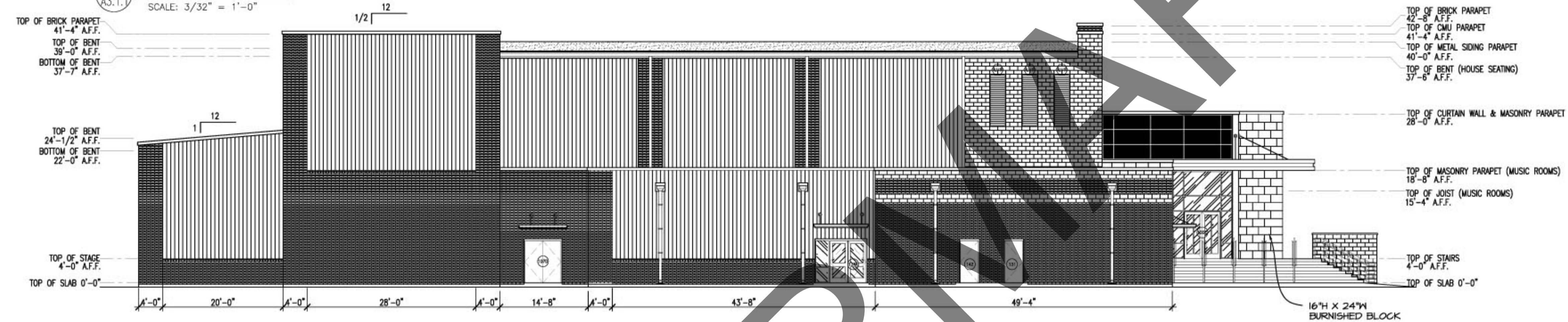
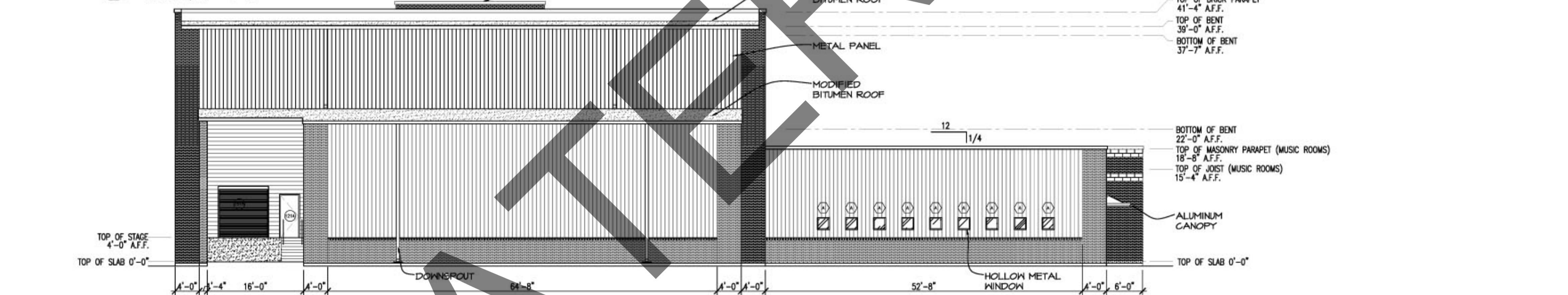


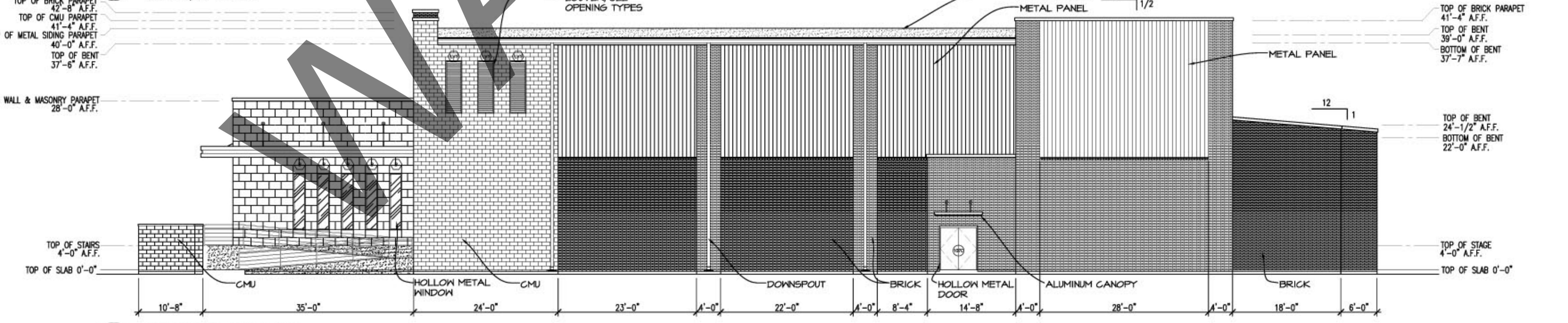
**1 WEST ELEVATION**  
 A3.1.1 SCALE: 3/32" = 1'-0"



**2 NORTH ELEVATION**  
 A3.1.1 SCALE: 3/32" = 1'-0"



**3 EAST ELEVATION**  
 A3.1.1 SCALE: 3/32" = 1'-0"



**4 SOUTH ELEVATION**  
 A3.1.1 SCALE: 3/32" = 1'-0"

AUDITORIUM  
 BAND & CHORAL  
 EXTERIOR ELEVATIONS

BCP

A3.1.1