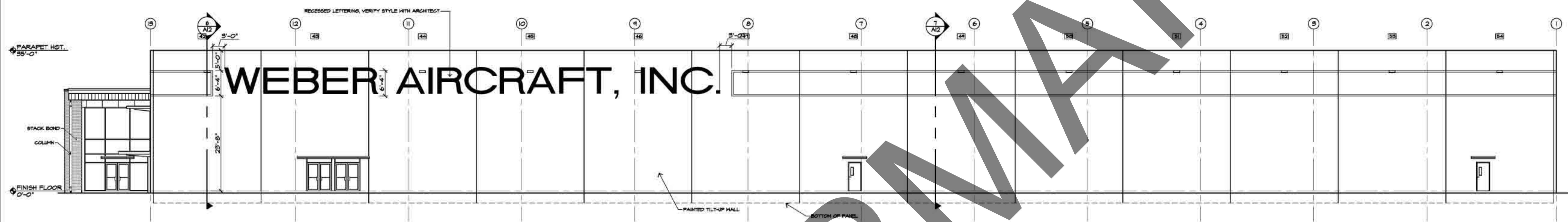
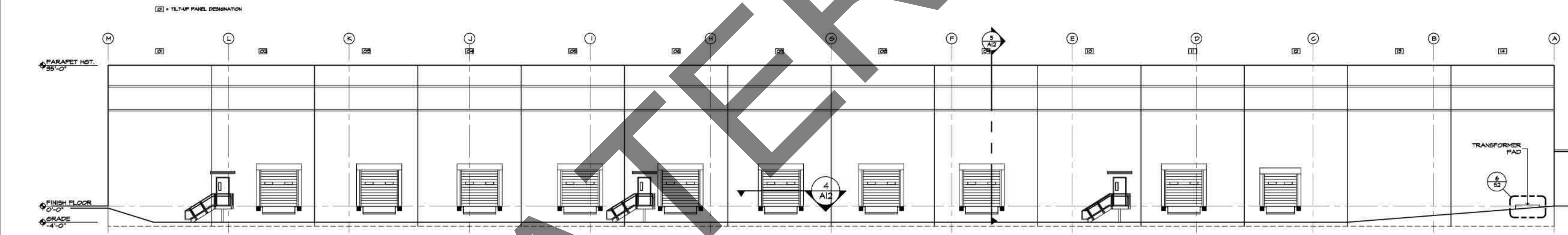


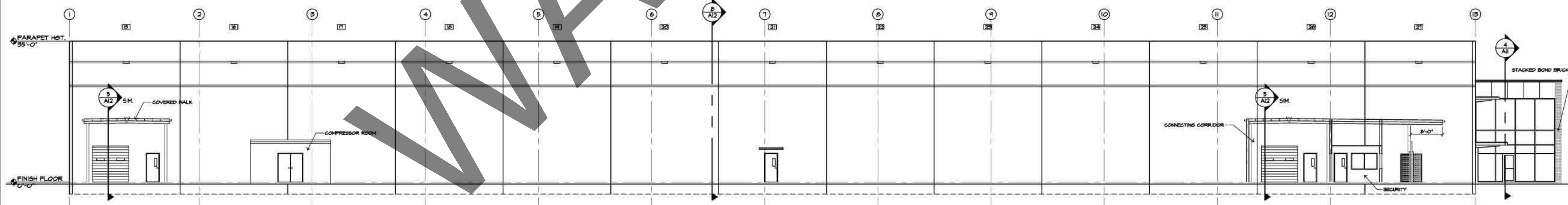
1 WEST ELEVATION
SCALE: 1" = 3/32"



2 SOUTH ELEVATION
SCALE: 1" = 3/32"



3 EAST ELEVATION
SCALE: 1" = 3/32"



4 NORTH ELEVATION
SCALE: 1" = 3/32"

PROJECT NO. DATE DRAWN BY:

Revisions	
No.	Description