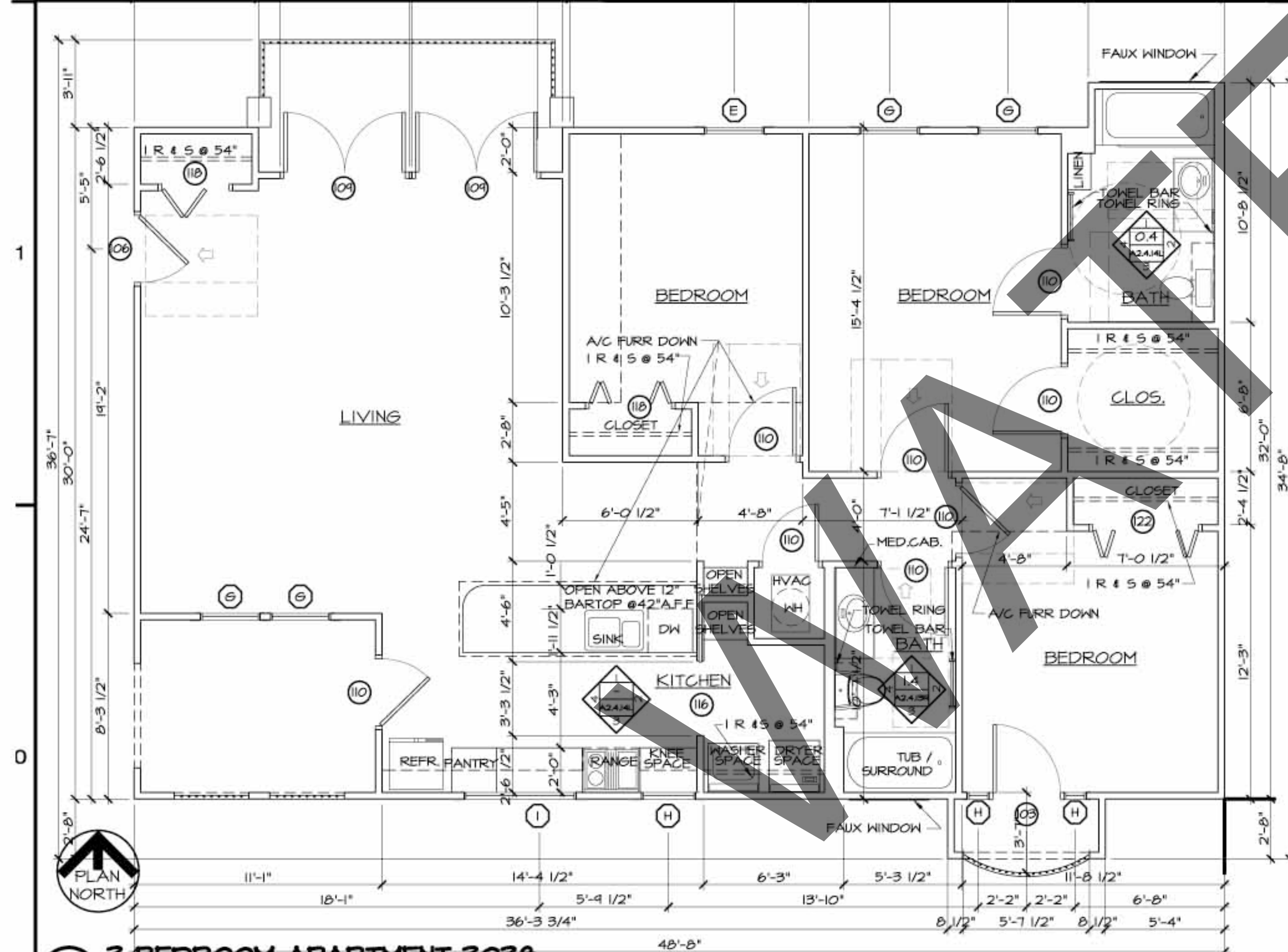
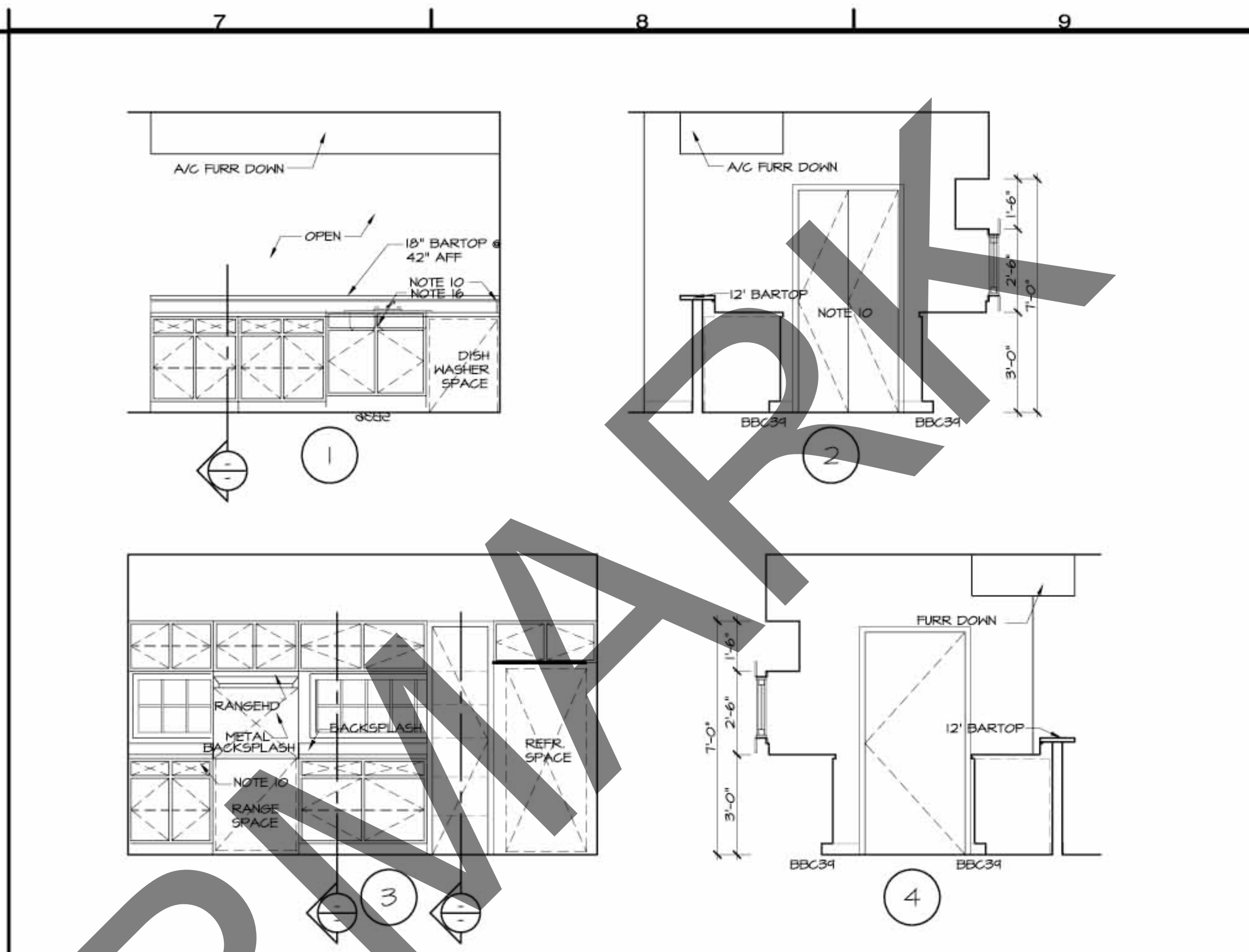


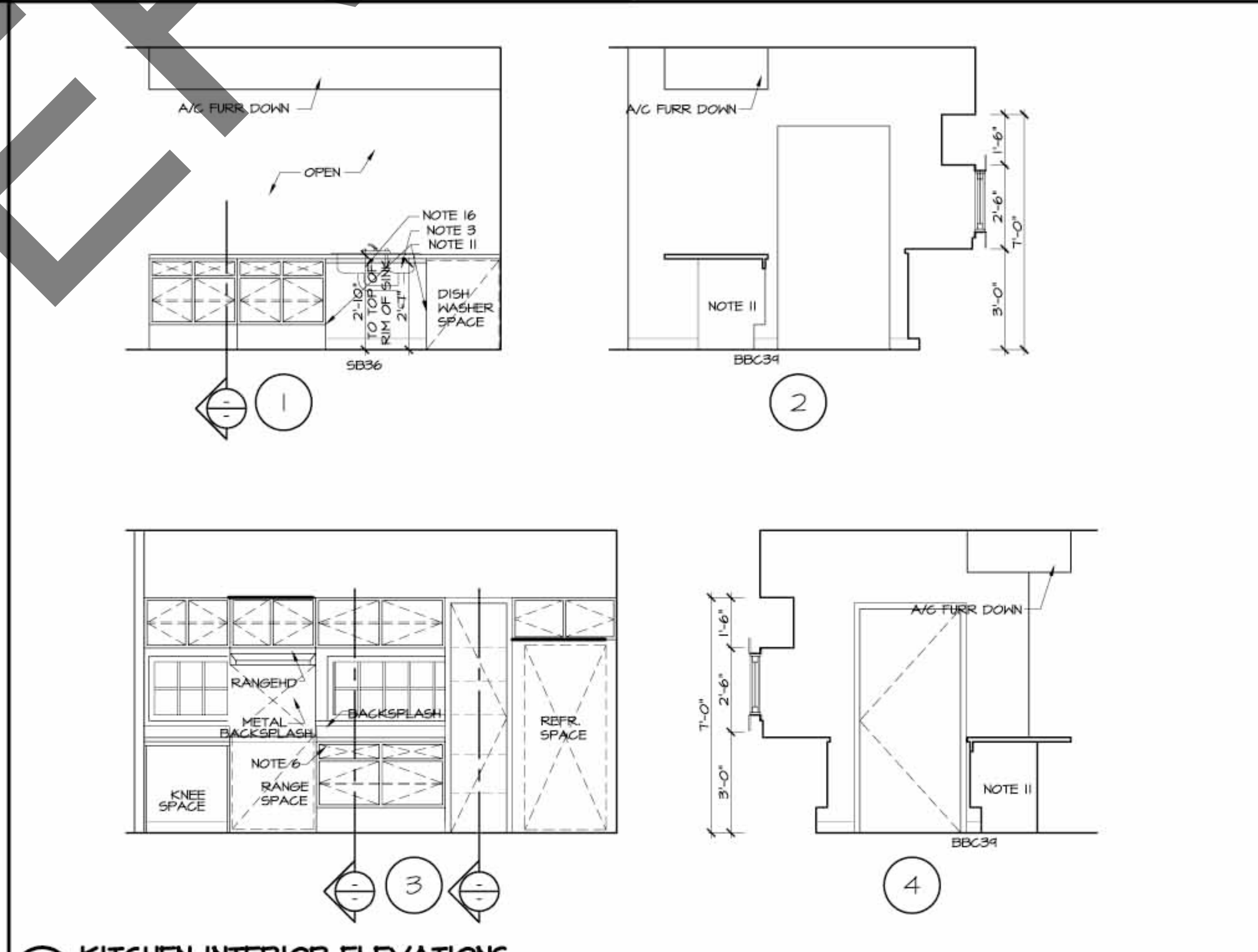
2.4 3 BEDROOM APARTMENT 3038
 SCALE: 1/4" = 1'-0"
UNIT #3-L (COVERED)



0.4 3 BEDROOM APARTMENT 3038
 SCALE: 1/4" = 1'-0"
UNIT #3-L (ACCESSIBLE)



2.7 KITCHEN INTERIOR ELEVATIONS
 SCALE: 3/8" = 1'-0"



0.7 KITCHEN INTERIOR ELEVATIONS
 SCALE: 3/8" = 1'-0"

- ### GENERAL NOTES
1. ALL WALLS TO BE 3/2" UNLESS OTHERWISE NOTED, WITH ALL DIMENSIONS MEASURED FROM FACE OF STUDS.
 2. 22" X 36" CLEAR OPENING ATTIC ACCESS PANEL @ TOP FLOOR UNITS ONLY.
 3. INSULATE P-TRAP AND SUPPLY LINES.
 4. PROVIDE SOLID WOOD BLOCKING IN WALL AND WHERE INDICATED ON PLANS (B"x LENGTH OF BAR +6").
 5. DOUBLE 3/4" PLYWOOD SUPPORT WITH LAMINATED PLASTIC SIDES AND EDGE.
 6. INSTALL RANGE HOOD CONTROLS IN DRAWER FRONT.
 7. EXTEND FLOORING UNDER ALL REMOVABLE CABINETS.
 8. SEE INTERIOR ELEVATIONS FOR SEAT TYPE.
 9. RECESS SHOWER ASSEMBLY AT ALL GROUND FLOOR UNITS PER MANUFACTURERS RECOMMENDATIONS.
 10. PROVIDE SIDE SPLASH AT WALL.
 11. PROVIDE FINISHED SOLID VENEER AT BLIND SIDE (NO OPENING).
 12. PROVIDE CABINET DOOR FOR ACCESS AT END OF BLIND BASE CABINET. SIZE CABINET DOOR AND DRAWER AS SHOWN.
 13. PROVIDE FINISHED SOLID VENEER BACK.
 14. REMOVABLE BASE TO BE SECURELY FASTENED TO ADJACENT CABINETS
 15. PROVIDE FINISHED SIDES AND/OR BACKS.
 16. 6" DEEP SINK

- ### UNIT LEGEND
- S STANDARD (COVERED)
 - AD ADAPTABLE
 - AC ACCESSIBLE
 - VHI VISUAL HEARING IMPAIRED

- ### CABINET LEGEND
- B BASE CABINET
 - BBC BASE BLIND CORNER
 - RSB REMOVABLE SINK BASE
 - RYSB REMOVABLE VANITY SINK BASE
 - SB SINK BASE
 - VSB VANITY SINK BASE
 - W WALL CABINET

REVISIONS		DATE	JULY 2007
NO.	DATE	PROJ. NO.	0644
		SHEET	A2.4.14GL
		OF	SHEETS