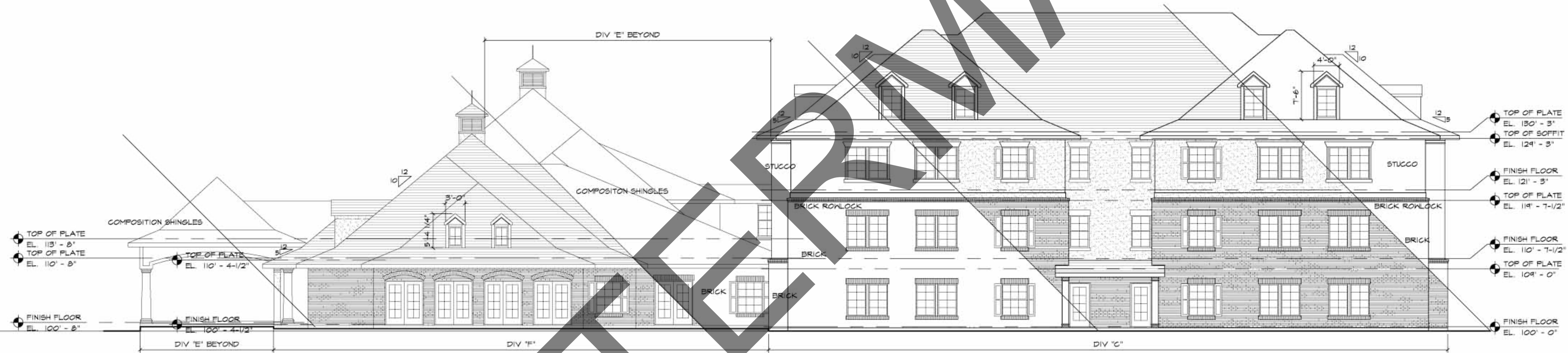
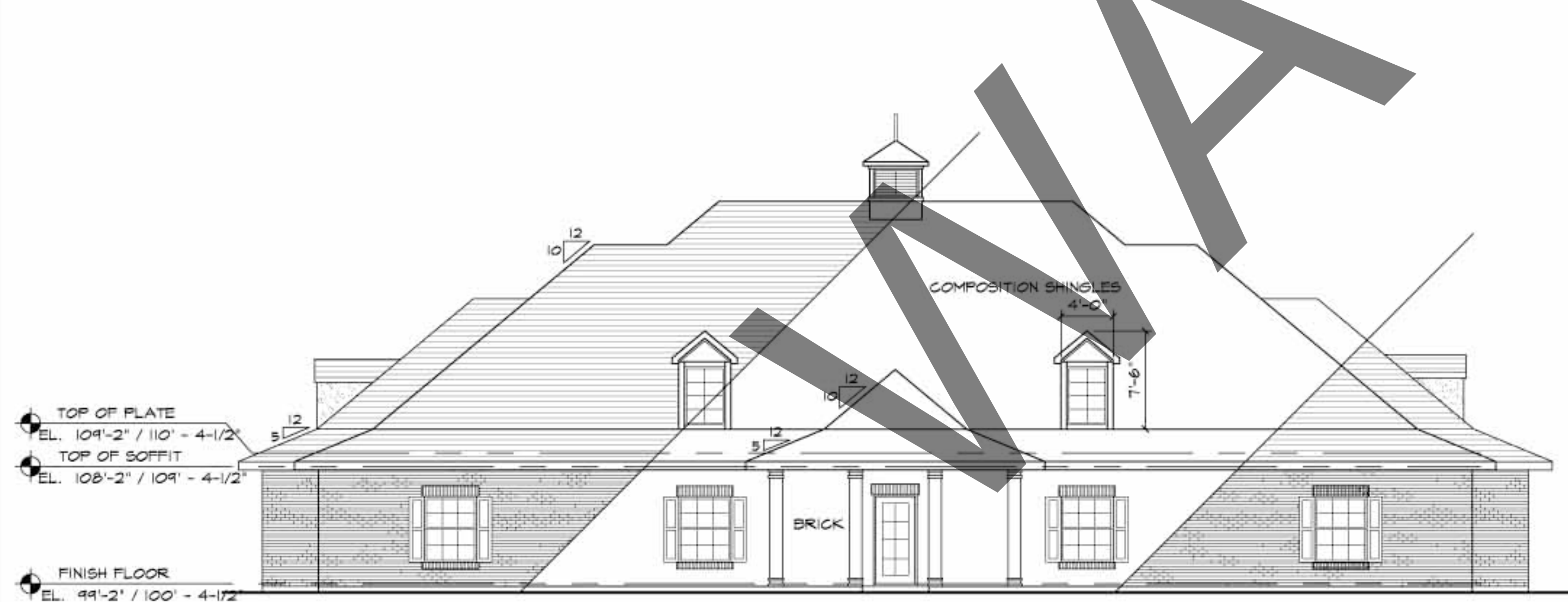


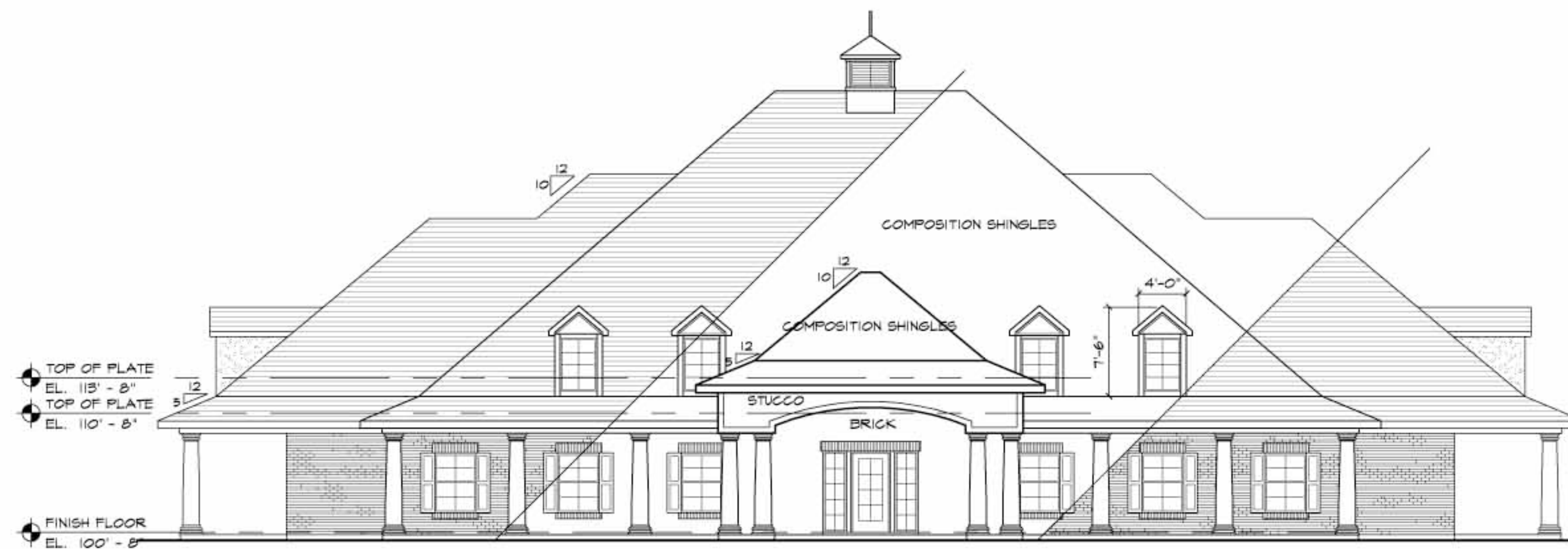
① LEFT SIDE ELEVATION
1/8" = 1' - 0"



② RIGHT SIDE ELEVATION
1/8" = 1' - 0"



③ PARTIAL FRONT ELEVATION DIV "D" / "F" OPP. HAND
1/8" = 1' - 0"



④ PARTIAL FRONT ELEVATION-COMMUNITY BLDG-DIV "E"
1/8" = 1' - 0"