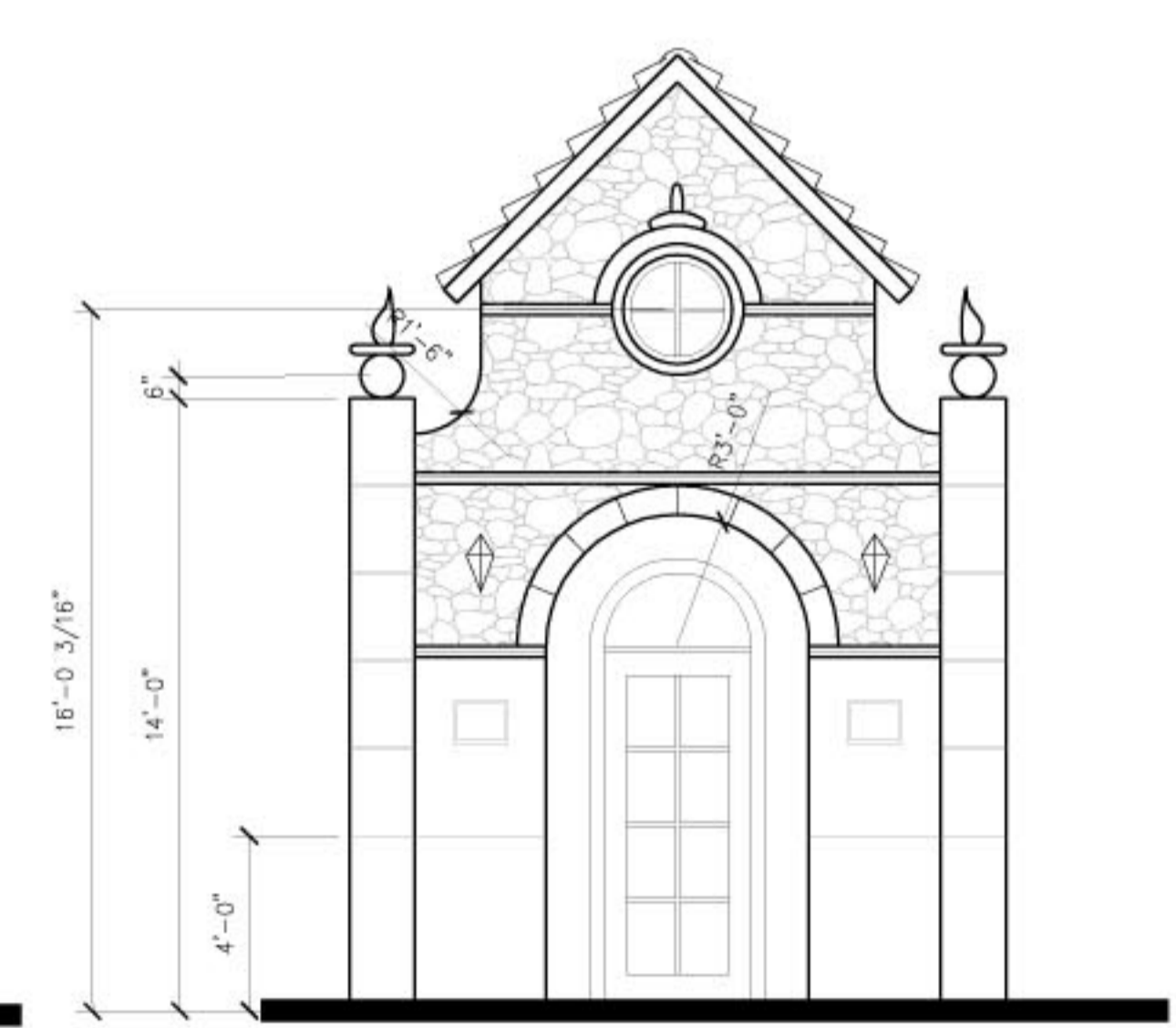


02 WEST ELEVATION
 SCALE: 1/4" = 1'-0"
 NOTE: REF 1/A301 FOR TYPICAL NOTES AND DIMENSIONS



01 EAST ELEVATION
 SCALE: 1/4" = 1'-0"
 NOTE: REF 1/A301 FOR TYPICAL NOTES AND DIMENSIONS



03 PARTIAL ENTRY ELEVATION
 SCALE: 1/4" = 1'-0"
 NOTE: REF 1/A301 FOR TYPICAL NOTES AND DIMENSIONS

D

o

C

o

B

o No. Date Revision Description

EXTERIOR ELEVATIONS

Project _____ Drawn by _____
 Date _____ Checked by MGQ-
 Drawing Number

A302

o

5

4

3

2

1