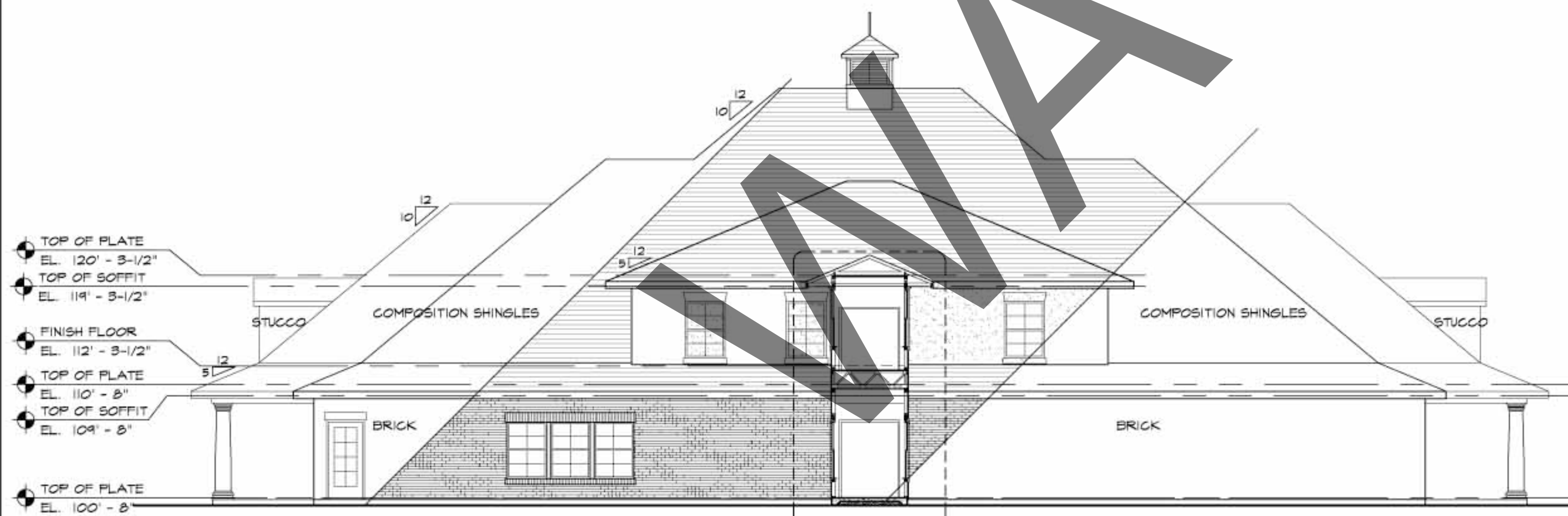


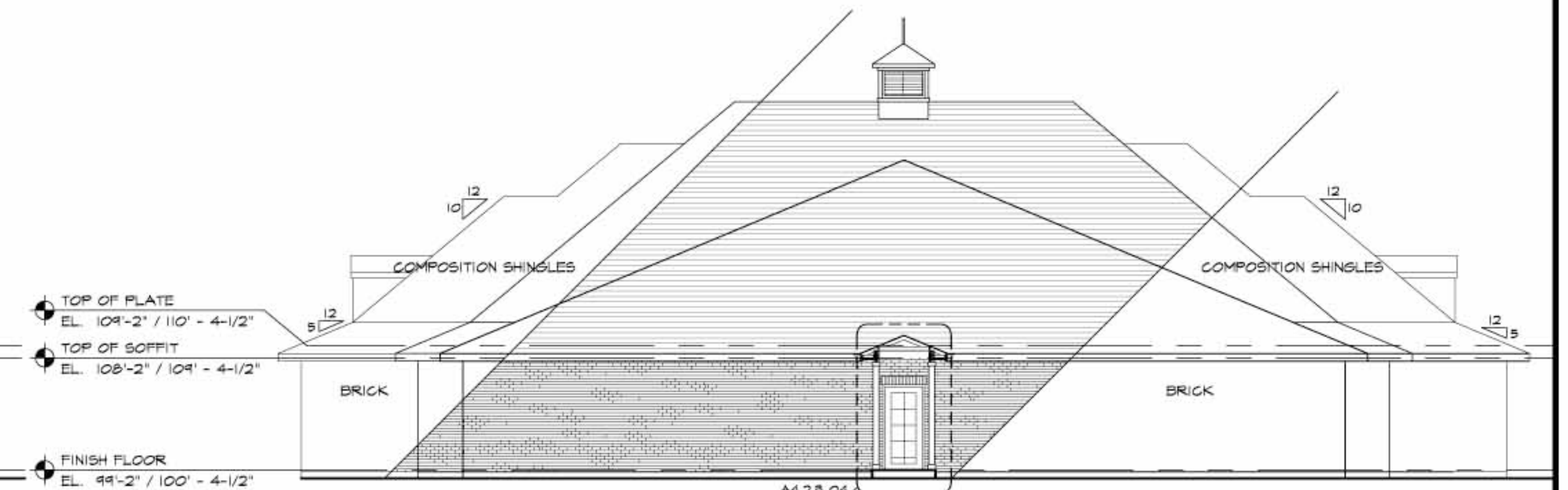
① LEFT SIDE ELEVATION - COMMUNITY BLDG DIV "E"
1/8" = 1' - 0"



② RIGHT SIDE ELEVATION - COMMUNITY BLDG DIV "E"
1/8" = 1' - 0"



③ REAR ELEVATION - COMMUNITY BLDG-DIV "E"
1/8" = 1' - 0"



⑤ REAR ELEVATION - DIVISION "D" / "F" OPP. HAND
1/8" = 1' - 0"