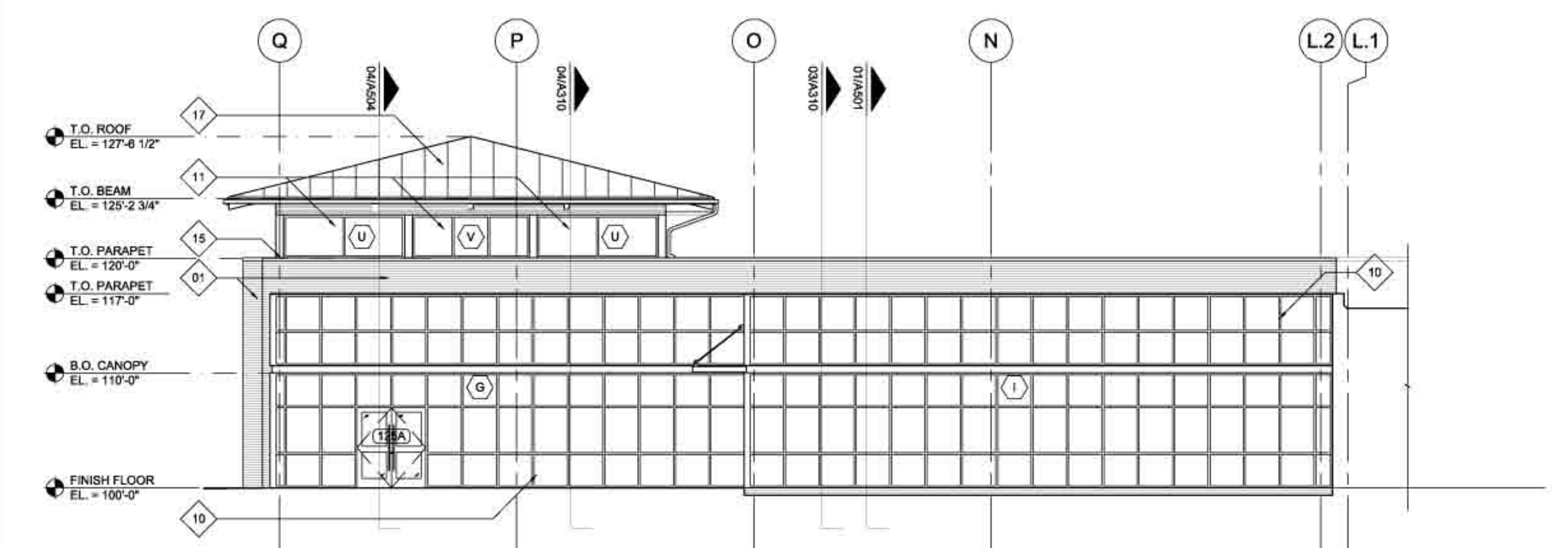
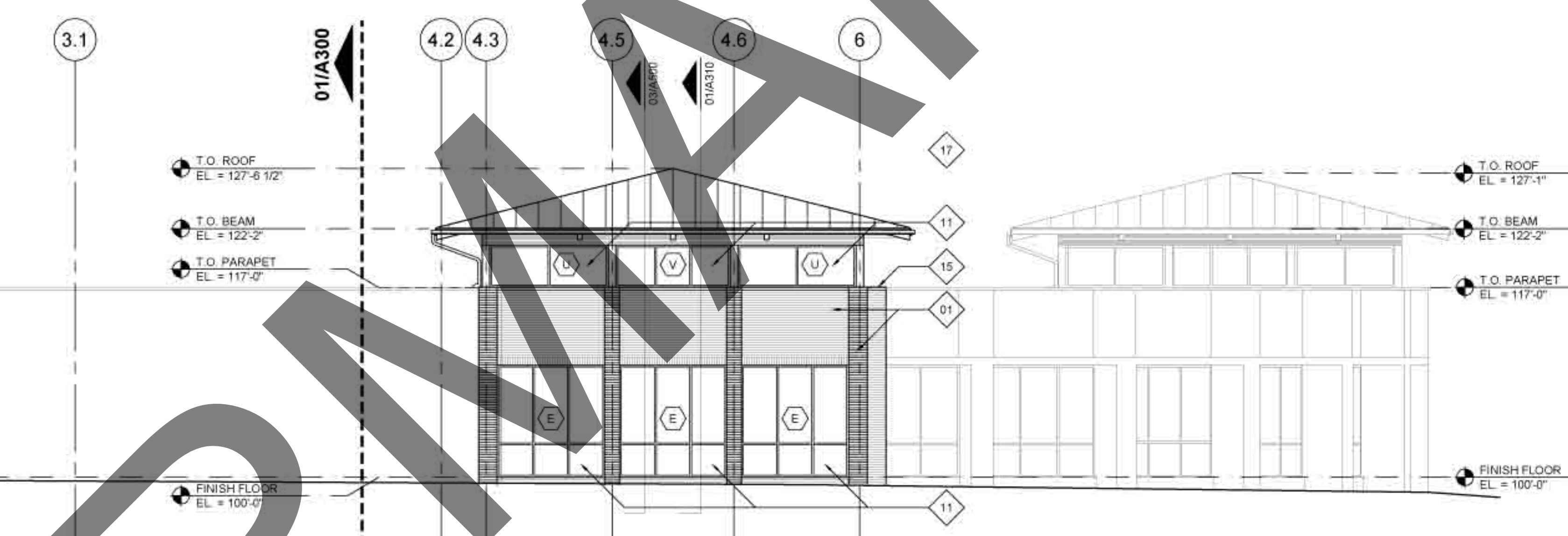


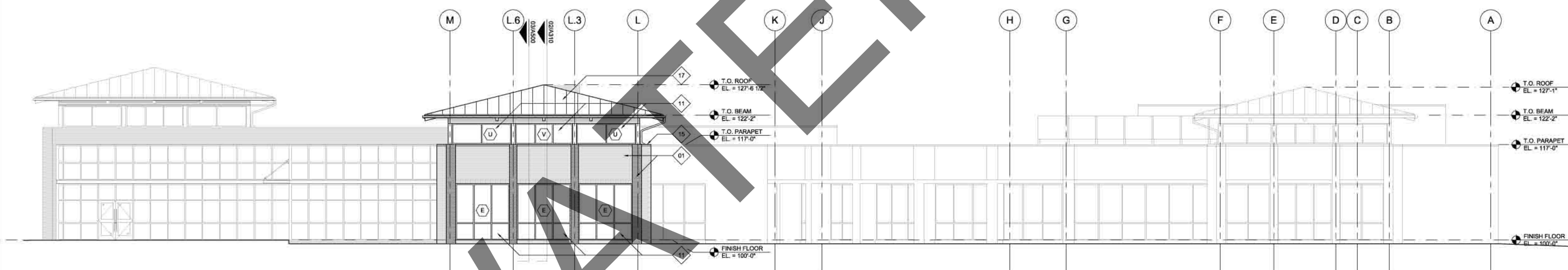
01 EXTERIOR ELEVATION
1/8" = 1'-0"



03 EXTERIOR ELEVATION
1/8" = 1'-0"



02 EXTERIOR ELEVATION
1/8" = 1'-0"



04 EXTERIOR ELEVATION
1/8" = 1'-0"

KEYNOTES BY SYMBOL

01	BRICK - (FIELD) "BRICK-1" COLOR/MANUF. T.B.D. REF. SPECIFICATION	08	1/2" STUCCO ACCENT BANDING ON SELF FURRING METAL LATH - (XXX) BY SENERGY OR APPROVED EQUAL. COLOR - "T.B.D." TEXTURE - "MAXI" REF. SPECIFICATIONS	15	CAST STONE SILL CAP. COLOR / MANUF. T.B.D. REF. SPECIFICATIONS	22	PAINTED HOLLOW METAL DOOR AND FRAME. DOOR AND FRAME TO BE PAINTED "XXX" COLOR (PER MANUFACTURER'S RECOMMENDATIONS)	29	CONTINUOUS PREFINISHED WALL FLASHING. REF. ROOF PLAN FOR CONDITION DETAILS	35	PREMANUFACTURED/PREFINISHED FIBERGLASS STEEPLE - COLOR "WHITE" - MANUF. AND MODEL NUMBER - T.B.D.
02	BRICK - (ACCENT) "BRICK-2" COLOR/MANUF. T.B.D. REF. SPECIFICATION	09	STANDARD BRICK VERTICAL CONTROL JOINT	16	CAST STONE WINDOWARCH SURROUND TRIM. COLOR / MANUF. T.B.D. REF. SPECIFICATIONS. DEDUCTIVE ALTERNATE. SUBSTITUTE 1/2" STUCCO ON SELF FURRING METAL LATH - BY SENERGY OR APPROVED EQUAL. COLOR - "XXX-T.B.D." TEXTURE - "MAXI" REF. SPECIFICATIONS	23	PAINTED HOLLOW METAL WINDOW ARCH SURROUND TRIM. COLOR / MANUF. T.B.D. REF. SPECIFICATIONS	30	PREFINISHED METAL COPING AT ROOF OVERHANG. REF. ROOF PLAN FOR CONDITION DETAILS. COLOR - ANODIZED ALUMINUM	36	8" DIA. ROSARY STAINED GLASS WINDOW. STAINED GLASS MOUNTED IN ANODIZED ALUMINUM WINDOW SYSTEM. STAINED GLASS TO BE CLEAR.
03	BRICK - (ACCENT) "BRICK-3" COLOR/MANUF. T.B.D. REF. SPECIFICATION	10	INSULATED GLASS IN ANODIZED ALUMINUM CURTAIN WALL SYSTEM. (CLEAR ANODIZED FINISH)	17	CAST STONE WINDOWARCH SURROUND TRIM. COLOR / MANUF. T.B.D. REF. SPECIFICATIONS. DEDUCTIVE ALTERNATE. SUBSTITUTE 1/2" STUCCO ON SELF FURRING METAL LATH - BY SENERGY OR APPROVED EQUAL. COLOR - "XXX-T.B.D." TEXTURE - "MAXI" REF. SPECIFICATIONS	24	PAINTED HOLLOW METAL WINDOW ARCH SURROUND TRIM. COLOR / MANUF. T.B.D. REF. SPECIFICATIONS	31	RECESSED METAL COPING AT ROOF OVERHANG. REF. ROOF PLAN FOR CONDITION DETAILS. COLOR - ANODIZED ALUMINUM	37	DASHED LINE INDICATES 1" EXTRUDED ALUMINUM VERTICAL STUCCO CHANNEL SCREED. MODEL NUMBER PCS-75-V-50 BY FRY REGLET CORP. OR APPROVED EQUAL LOCATED BEHIND DOWNSPOUT.
04	BRICK - (ACCENT) "BRICK-4" COLOR/MANUF. T.B.D. REF. SPECIFICATION	11	INSULATED GLASS IN ANODIZED ALUMINUM WINDOW SYSTEM. (CLEAR ANODIZED FINISH) REFERENCE	18	1/2" EXTRUDED ALUMINUM HORIZONTAL STUCCO CHANNEL SCREED. MODEL NUMBER PCS-75-V-50 BY FRY REGLET CORP. OR APPROVED EQUAL	25	PAINTED HOLLOW METAL WINDOW ARCH SURROUND TRIM. COLOR / MANUF. T.B.D. REF. SPECIFICATIONS	32	SECURITY CAMERA TO BE MOUNTED TO BLOCK WALL. ARCHITECT TO VERIFY MOUNTING HEIGHT AND CAMERA HOUSING COLOR PRIOR TO INSTALLATION.	38	DASHED LINE INDICATES 1/2" EXTRUDED ALUMINUM VERTICAL STUCCO CHANNEL SCREED. MODEL NUMBER PCS-75-V-50 BY FRY REGLET CORP. OR APPROVED EQUAL LOCATED BEHIND DOWNSPOUT.
05	1/2" STUCCO ON SELF FURRING METAL LATH - (XXX) BY SENERGY OR APPROVED EQUAL. COLOR - "T.B.D." TEXTURE - "MAXI" REF. SPECIFICATIONS	12	1/2" STUCCO ON SELF FURRING METAL LATH - (XXX) BY SENERGY OR APPROVED EQUAL. COLOR - "T.B.D." TEXTURE - "MAXI" REF. SPECIFICATIONS	19	OVERHEAD COILING DOOR WITH ANODIZED ALUMINUM FINISH - REF. SPECIFICATIONS	26	EXTERIOR SIGNAGE "XXX" FINISH. F-1 SATIN WITH MATTE EDGE. MATERIAL - ALUMINUM. LIGHT REF. SHEET A1000 LETTERING SHALL BE USED FOR ALL ROOM	33	FULLY RECESSED KNOX-BOX MOUNTED @ 42" A.F.F. MODEL NO 3203 SERIES BY KNOX COMPANY 1601 DEER VALEY ROAD, PHOENIX ARIZONA. 85027 - (602) 562-5669. INCLUDE RMX SHELL HOUSING.	39	DASHED LINE INDICATES 1/2" EXTRUDED ALUMINUM VERTICAL STUCCO CHANNEL SCREED. MODEL NUMBER PCS-75-V-50 BY FRY REGLET CORP. OR APPROVED EQUAL LOCATED BEHIND DOWNSPOUT.
06	1/2" STUCCO ON SELF FURRING METAL LATH - (XXX) BY SENERGY OR APPROVED EQUAL. COLOR - "T.B.D." TEXTURE - "MAXI" REF. SPECIFICATIONS	13	OVERHEAD COILING DOOR WITH ANODIZED ALUMINUM FINISH - REF. SPECIFICATIONS	20	PREFINISHED METAL COPING. COLOR - CLEAR ANODIZED FINISH	27	SURFACE MOUNTED EXTERIOR LIGHT FIXTURE. TYPE "T" PROVIDE AND INSTALL IN WALL WOOD BLOCKING AS REQUIRED FOR SECURE MOUNTING OF LIGHT FIXTURE - MOUNT PER MANUFACTURE'S RECOMMENDATIONS	34	METAL WALL PANEL AT BACKSIDE OF PARAPET. REF. ROOF PLAN FOR DETAILS	40	GALVANIZED SHEET METAL COUNTER FLASHING. PROVIDE MIN. 6" WIDE COVER PLATES AT JOINTS. REF. ROOF DETAILS.

JOB NO. 28000
 Issue Date: 06/19/2009
 Drawn By: DZ
 Checked By: TB
 SHEET NO.
A300