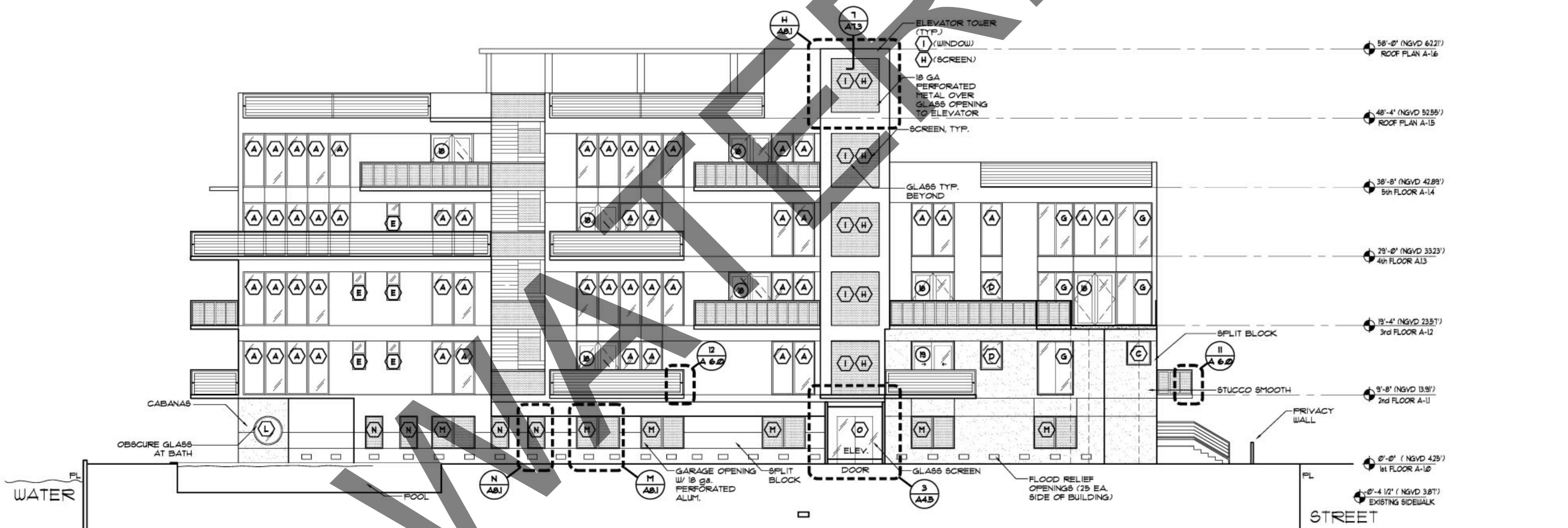


SIDE ELEVATION (TYP. BOTH SIDES - EAST & WEST)  
SCALE 1/8"=1'-0"



SECTION CENTRAL COURTYARD ELEVATION (TYP. BOTH SIDES)  
SCALE 1/8"=1'-0"

DRAWN BY:  
C.P.  
CHECKED BY:  
ARI SKLAR

PROPOSED  
BLDG ELEVATIONS

A-4.1

DATE :