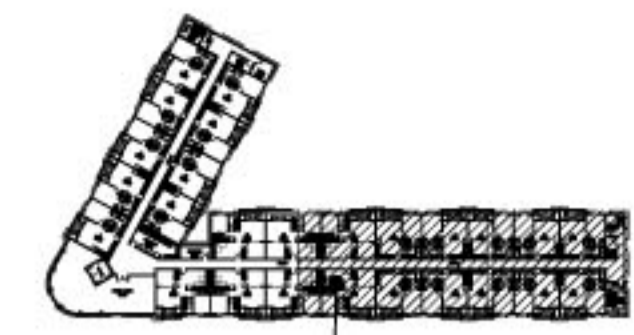


WALL LEGEND

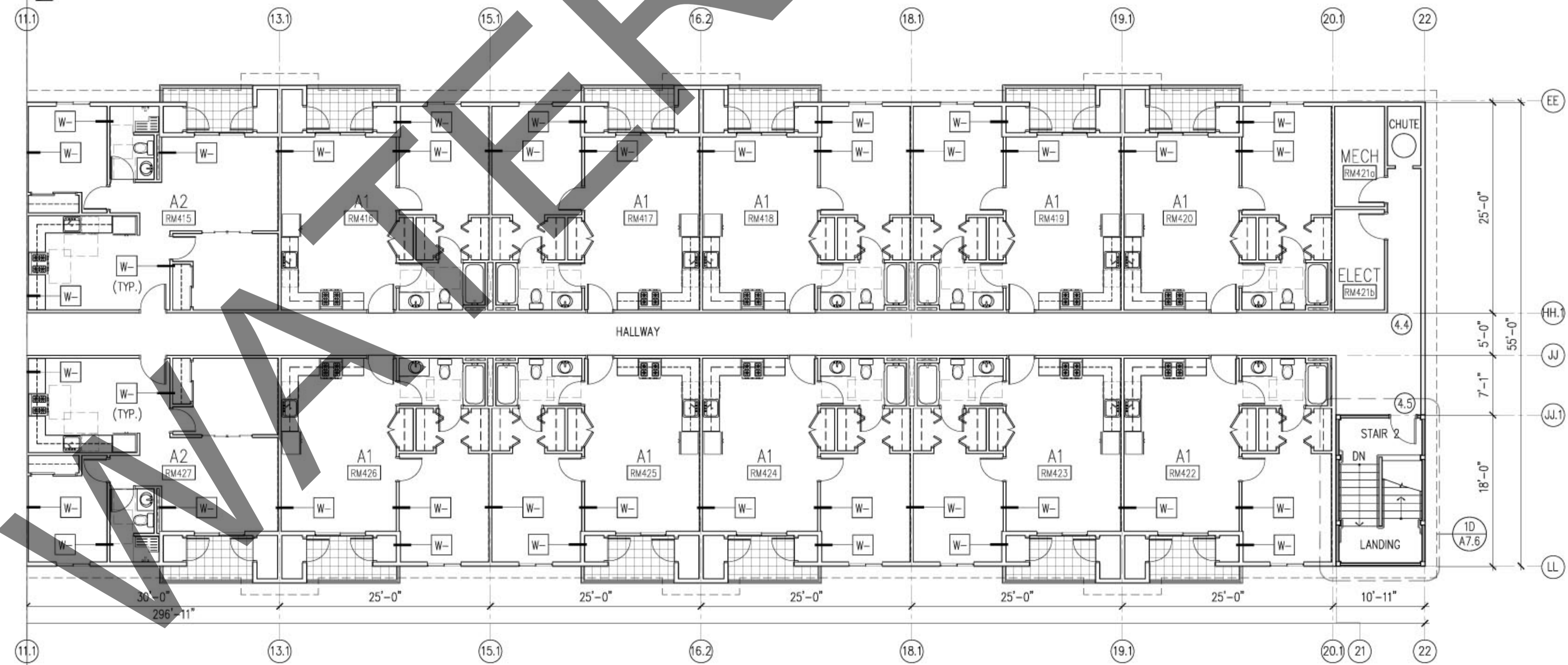
SYMBOL	DESCRIPTION	SYMBOL	DESCRIPTION	SYMBOL	DESCRIPTION
	W1 15-13 2x4 OR 2x6 WOOD STUDS 16" ON CENTER WITH 7/8" CEMENT PLASTER (MEASURED FROM THE FACE OF STUDS) ON THE EXTERIOR SURFACE WITH INTERIOR SURFACE TREATMENT AS REQUIRED FOR INTERIOR WOOD STUD PARTITIONS IN THIS TABLE. PLASTER MIX 1:4 FOR SCRATCH COAT AND 1:5 FOR BROWN COAT, BY VOLUME, CEMENT TO SAND.		W4 ONE LAYER 1/2" PROPRIETARY TYPE X GYPSUM PANELS INSERTED BETWEEN 2 1/2" FLOOR AND CEILING J-RUNNERS WITH 1 SECTION OF 2 1/2" STEEL C-T STUDS BETWEEN PANELS. FACE LAYER 1/2" PROPRIETARY TYPE X GYPSUM WALLBOARD APPLIED PARALLEL TO STUDS WITH VERTICAL JOINTS MIDWAY BETWEEN STUDS AND LAMINATED TO PROPRIETARY GYPSUM PANELS WITH 4" WIDE STRIPS OF TAPING COMPOUND AT WALLBOARD PERIMETER AND VERTICAL CENTERLINE. 1 1/2" TYPE G DRYWALL SCREWS 24" O.C. LOCATED 1 1/2" BACK FROM WALLBOARD EDGES AND AT VERTICAL CENTERLINE.		W6 8" CONCRETE PARAPET WALL. SEE PLAN FOR HEIGHT & LOCATION, U.N.O.
	W2 ONE LAYER 5/8" TYPE X GYPSUM WALLBOARD OR VENEER BASE APPLIED AT RIGHT ANGLES OR PARALLEL TO EACH SIDE OF 3 5/8" METAL STUDS 24" O.C. TO TOP AND BOTTOM RUNNERS AND INTERMEDIATE STUDS. STAGGER ALL VERTICAL AND HORIZONTAL JOINTS 24" O.C. EACH SIDE AND OPPOSITE SIDES.		W5 12" CONCRETE RETAINING WALL, SEE PLAN FOR HEIGHT & LOCATION, U.N.O.		W7 CHUTE WALL
	W3 RESILIENT CHANNELS 24" O.C. ATTACHED AT RIGHT ANGLES TO ONE SIDE OF 2 x 4 WOOD STUDS 16" OR 24" O.C. WITH 1 1/4" TYPE S DRYWALL SCREWS. ONE LAYER 5/8" PROPRIETARY TYPE X GYPSUM WALLBOARD OR GYPSUM VENEER BASE APPLIED PARALLEL TO CHANNELS WITH 1" TYPE S DRYWALL SCREWS 12" O.C. END JOINTS BACKBLOCKED WITH RESILIENT CHANNELS. 3" MINERAL FIBER INSULATION, 2.0 OR 2.3 PCF, IN STUD SPACE. OPPOSITE SIDE: ONE LAYER 5/8" PROPRIETARY TYPE X GYPSUM WALLBOARD OR GYPSUM VENEER BASE APPLIED AT RIGHT ANGLES TO STUDS WITH 1 1/2" TYPE W DRYWALL SCREWS 12" O.C. VERTICAL JOINTS STAGGERED 48" ON OPPOSITE SIDES. SOUND TESTED WITH STUDS 16" O.C. AND OPEN FACE OF MINERAL FIBER INSULATION BLANKETS TOWARD RESILIENT CHANNEL-SIDE OF STUD SPACE. (LOAD-BEARING)				



PARTIAL FOURTH FLOOR PLAN

KEYPLAN
NTS. NORTH

MATCHLINE, FOR CONTINUATION SEE A2.4



1 PARTIAL FOURTH FLOOR PLAN (BLDG 1) NORTH
SCALE: 1/8" = 1'-0"

PARTIAL FOURTH FLOOR PLAN (BLDG 1)

Revisions:

Date:
Project No.:
Drawn By:
JGL
Check By:
DER/FVB
Sheet No.:

A2.4a