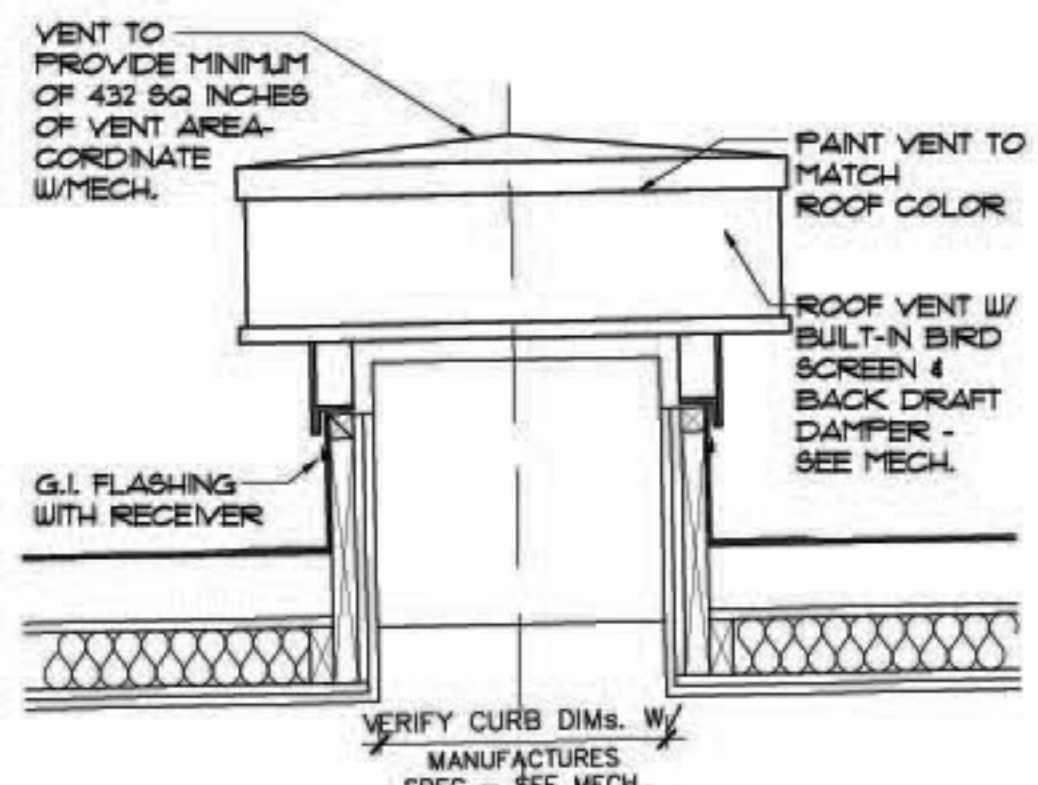
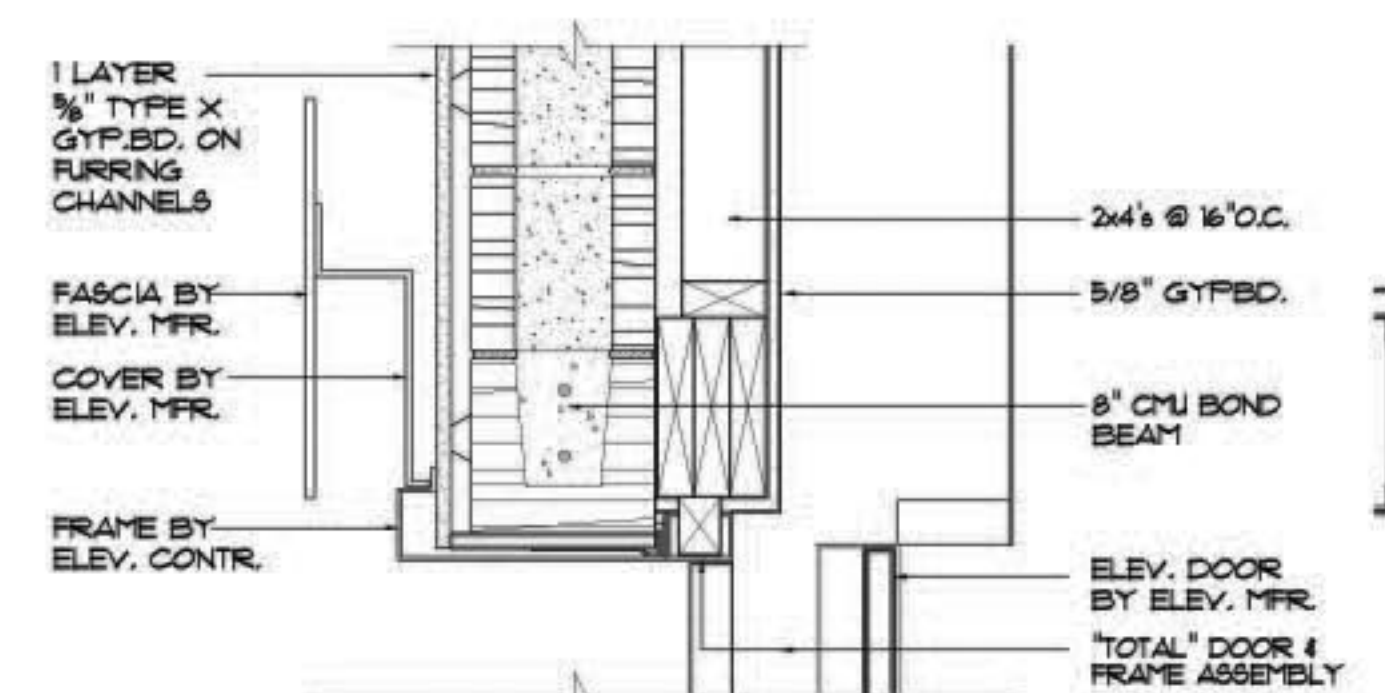


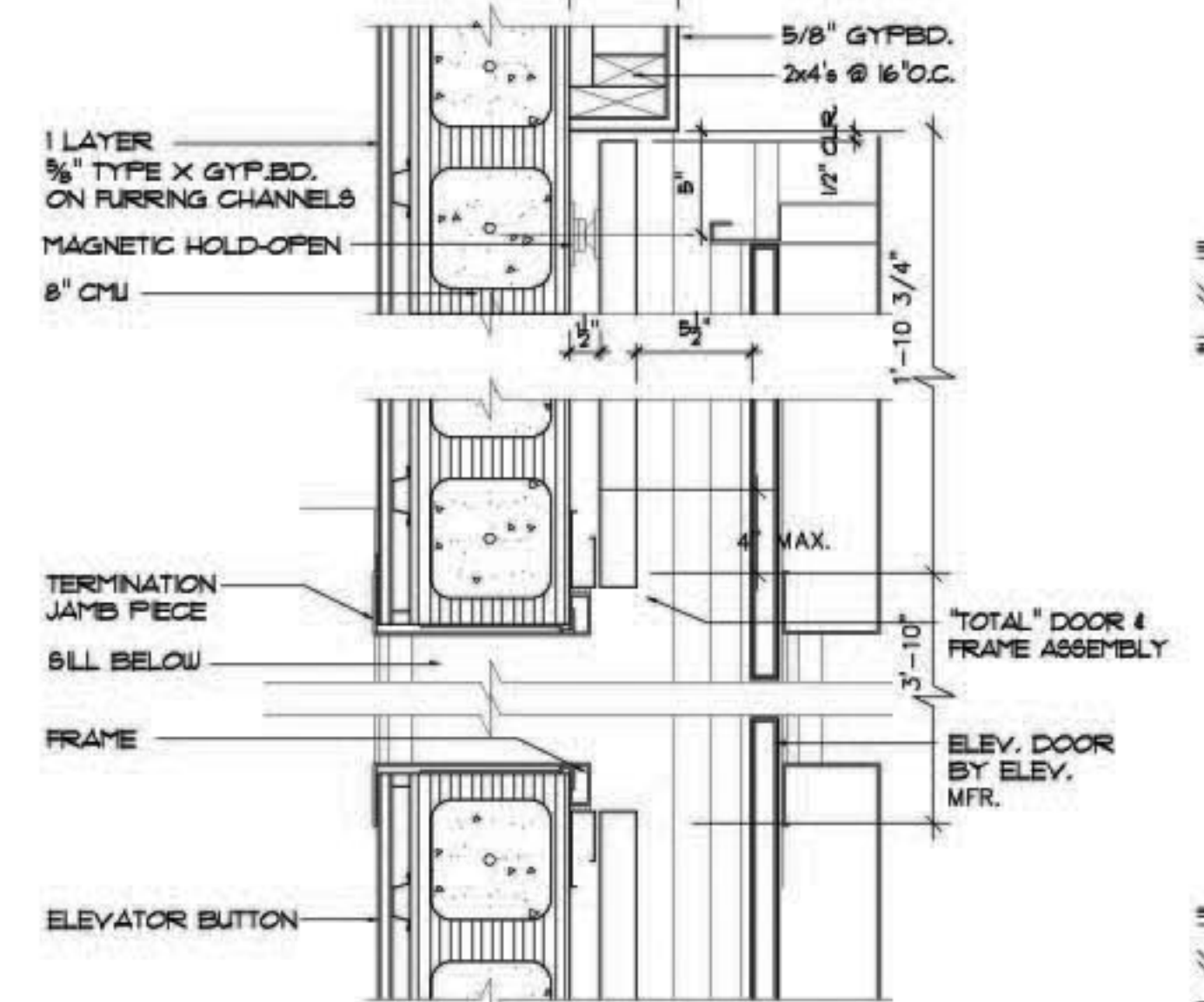
**07 ENLARGED ELEV. PLAN**  
1/4" = 1'-0"



**06 ELEVATOR VENT THRU ROOF**  
1" = 1'-0"

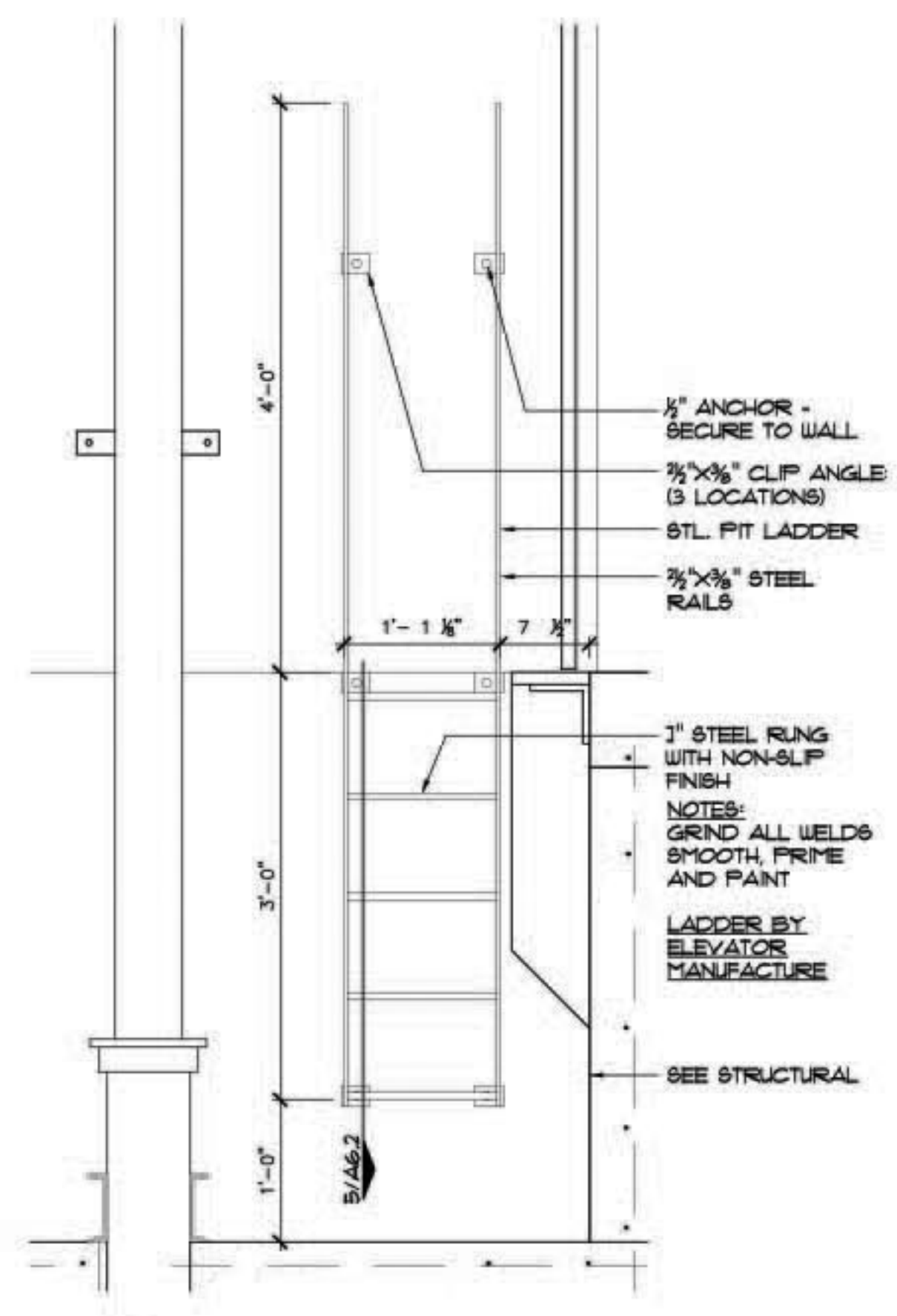


**B HEAD**

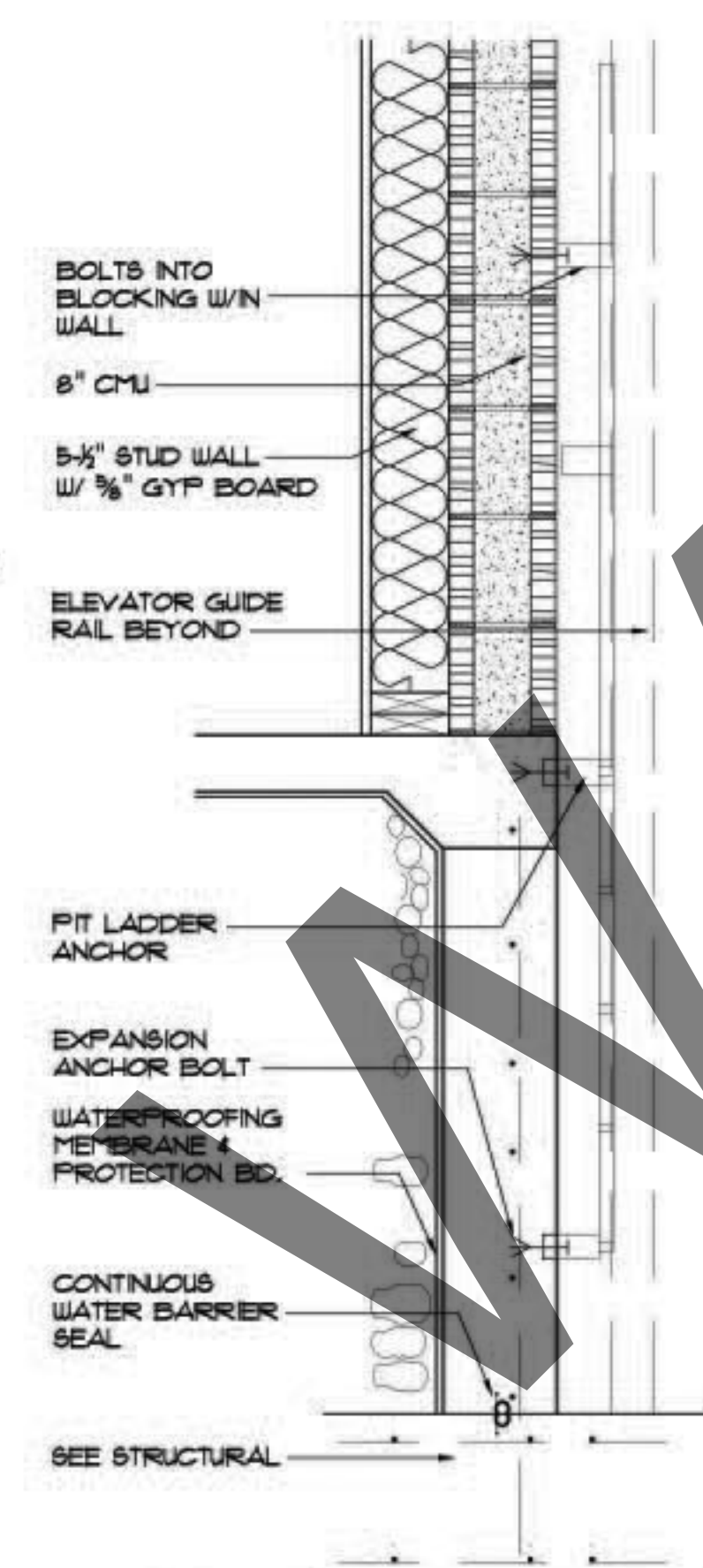


**A JAMBS**

**05 ELEVATOR OPNG.**  
1-1/2" = 1'-0"

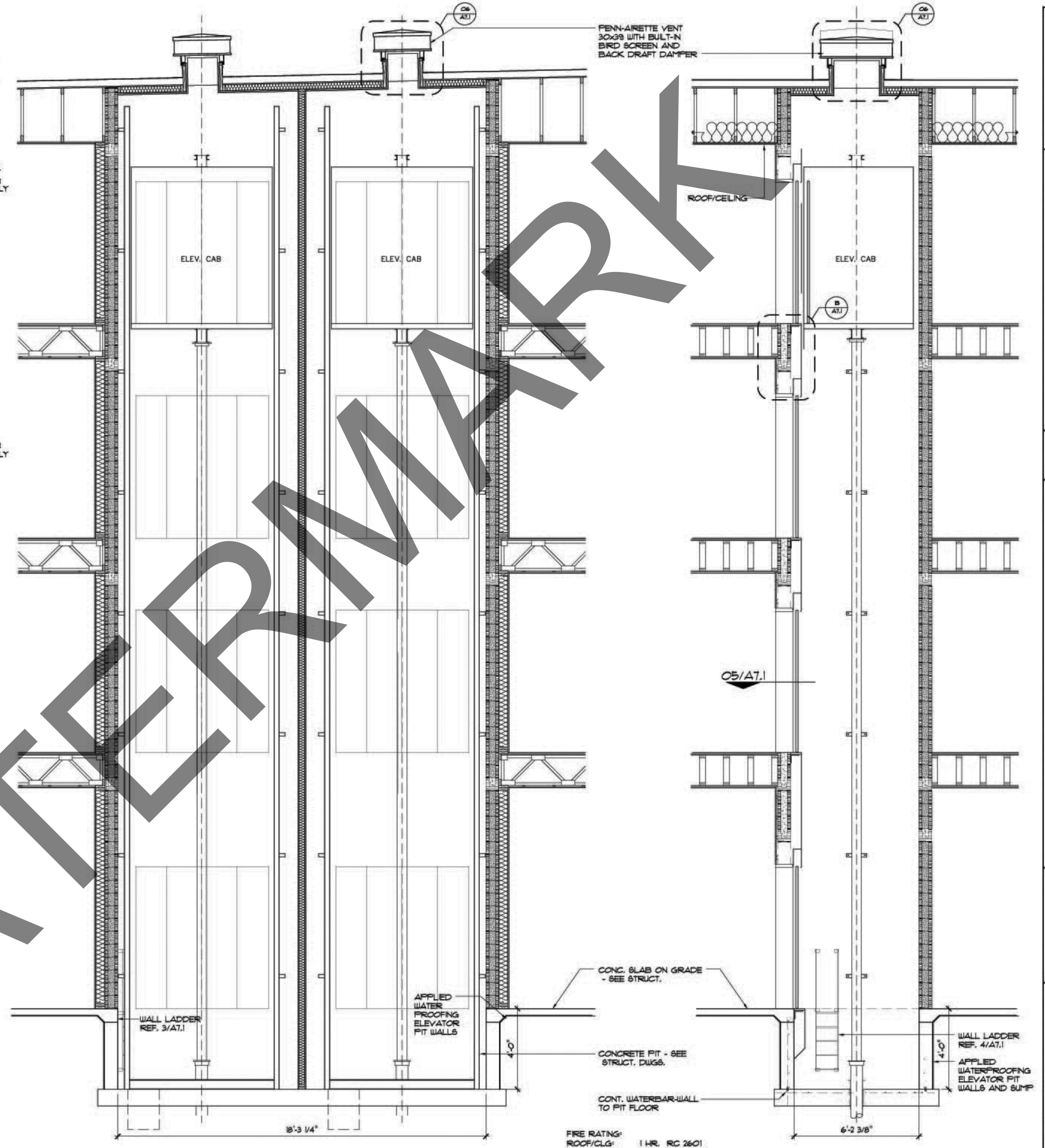


**04 LADDER DETAIL**  
1" = 1'-0"



**03 LADDER DETAIL**  
1" = 1'-0"

**GENERAL ELEVATOR NOTES:**  
THE ELEVATOR AND ELEVATOR ROOM ARE BASED ON AN "THYSSENKRUPP" SEVILLE 30. REFERENCE ID SHEETS FOR ELEVATOR CAB FINISHES.



**02 TYP. ELEVATOR TOWER SECTION**  
3/8" = 1'-0"

**01 TYP. ELEVATOR TOWER SECTION**  
3/8" = 1'-0"

FIRE RATING:  
ROOF/CLG: 1 HR. RC 2601  
FLOOR/CLG: 1 HR. ILL L528  
STAIR/UNIT: 1 HR. LB11